

# The Developmental Roots of the Risk Factors Involved in the Commission of Coercive Sexual Behavior

---

16th conference of the International Association for the Treatment of Sexual Offenders

---

## *The authors*

---

DELI C.

M.A. Psychology

Ph.D. student Criminology

Université de Montréal

GAUTHIER A.

B.A. Psychology

Ph.D. student Criminology

Université de Montréal

GARANT E.

M.A. Criminology

Ph.D. student Criminology

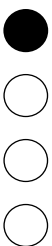
Université de Montréal

PROULX J.

Ph.D. Psychology

Full professor Criminology

Université de Montréal



# Structure of the presentation

**00** Presentation of the symposium

---

**01** The mediating role of psychopathology in the emergence of deviant sexual fantasies in sexual aggressors of children

---

*Garant, Gauthier, Deli, Proulx*

**02** Life Path Trajectories Leading to Deviant Sexual Fantasies in Sexual Aggressors of Women

---

*Gauthier, Deli, Garant, Proulx*

**03** Hostile Masculinity and Emotional Negativity as Pathways to Hostility Toward Women

---

*Deli, Garant, Gauthier, Proulx*

**03**

# **Hostile Masculinity and Emotional Negativity as Pathways to Hostility Toward Women**

Deli, C., Garant, E., Gauthier, A., & Proulx, J. (2021)

*Presenter: Caroline Deli*

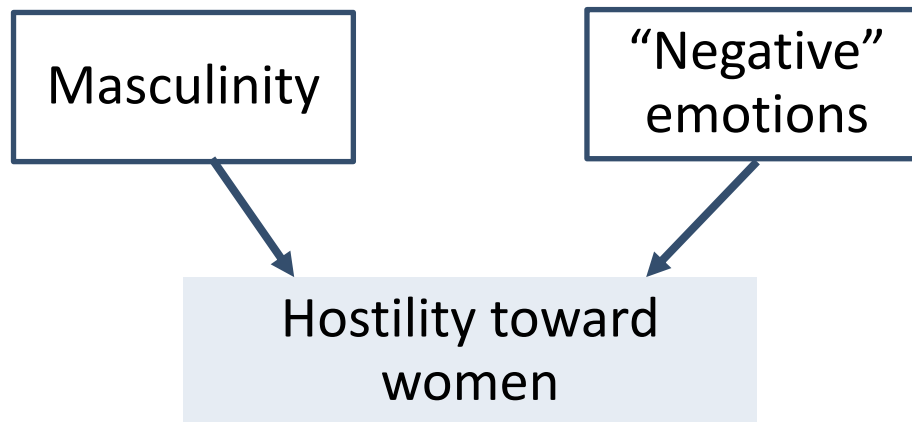


# 1. Background

## 1.1. INTRODUCTION

- Hostility toward women: (Check, 1988)
  - Hostility specifically directed toward women
  - Implicit attitude, beliefs, behaviours
- **Purpose of the research:** develop an etiological model of hostility toward women

*Focus on two types of variables:*

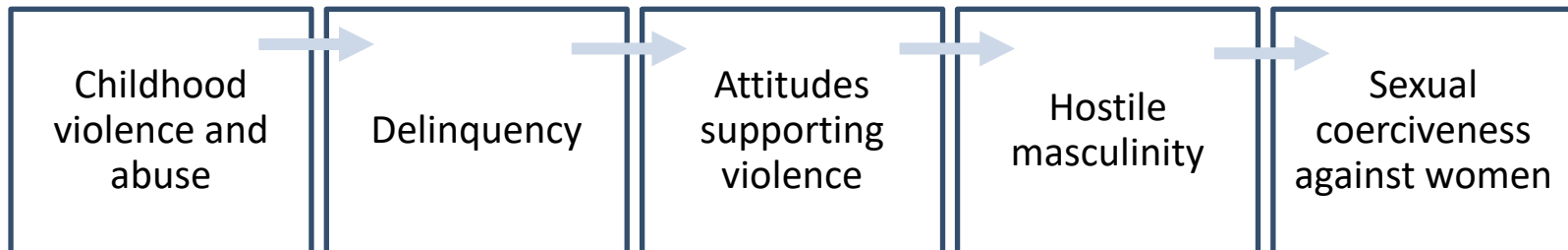


# 1. Background

## 1.2. MASCULINITY

- How coercive sexual behaviours can be explained by “masculine” characteristics ? (Burt, 1980 ; Murnen et al., 2002)
  - “Hostile masculinity” (Malamuth, 1996)

*Confluence mode of sexual aggression  
(Malamuth, 1996) – hostile masculinity path*



# 1. Background

## 1.2. MASCULINITY

- Knight & Sims-Knight (2003): division of the “hostile masculinity” factor:

Malamuth’s “hostile masculinity”

Callous / unemotional  
traits

Antisocial behaviour

- Hostility toward women and psychopathy-related characteristics (Marshall & Moulden, 2001 ; LeBreton et al., 2013).

# 1. Background

## 1.3. “NEGATIVE” EMOTIONS

- “Negative emotions”: depressive thoughts, anxiety, low self-esteem, self-devaluation, suicidal thoughts
- Effect on hostility toward women:
  - Sense of inadequacy or powerlessness, low self-esteem, low personal well-being (Cowan & Mills, 2004)
  - Dissatisfaction, lack of hope for the future, feelings of incompetence (Williams & Arntfields, 2020).

# 1. Background

## AIM OF THE STUDY

The aim of our study is to develop an etiological model of hostility toward women.

*What etiological factors lead to hostility toward women?*

- How variables associated with masculinity and antisocial characteristics contribute to hostility toward women?
- How “negative” emotions contribute to hostility toward women?



# 2. Methods

## 2.1. DATA SOURCE

*The sample of this study has been selected from a database.*

- Sexual offenders who received a sentence of 2 years in Quebec
- Federal prisoners
- Psychometric tests
- Semi-structured interviews based on the **Computerized Questionnaire for Sexual Aggressors** (CQSA; St-Yves, Proulx & McKibben, 1994)

# 2. Methods

## 2.2. SAMPLE

**N = 200 sexual offenders of women.**

*The victims were 16 years old or older.*

### ***Characteristics:***

- Between 18 and 68 years old ( $m = 33.49$  ;  $SD = 9.06$ )
- 88.5% were French-speaking
- 53.5% were single, 4% separated, 10.5% divorced, 0.5% widowed, 25% in a relationship, 6.5% married.
- 86% were Caucasian
- 58% declared that they had adverse feelings or a conflict with women 48 hours or 1 year prior to one of their offences

# 2. Methods

## 2.3. MEASURES

### Hostility toward women:

Adverse feelings or a conflict (tension, disagreement, opposition) with women 48h or 1 year before committing his crime.

### Psychometric instruments (French versions):

- *MMPI-2 (Butcher et al., 1989)*
- *Carlson Psychological Survey (CPS; Carlson, 1981)*
- *Beck Depression Inventory (BDI; Beck et al., 1961)*
- *State-Trait Anxiety Inventory (STAI; Spielberger et al. 1999)*

# 2. Methods

## 2.4. ANALYSIS

### (1) Descriptive statistics

### (2) Structural Equation Modeling (Mplus)

- Statistical analysis testing relationships between latent and observed variables
- Combination of factor analyses and regressions

#### **Fit indices:** (Kline, 2015)

- Root Mean Square Error of Approximation (RMSEA)  
     $< 0.08$
- Comparative Fit Index (CFI)  
     $> 0.90$
- Tucker-Lewis Index (TLI)  
     $> 0.90$



# 3. Results

## 3.1. DESCRIPTIVE STATISTICS

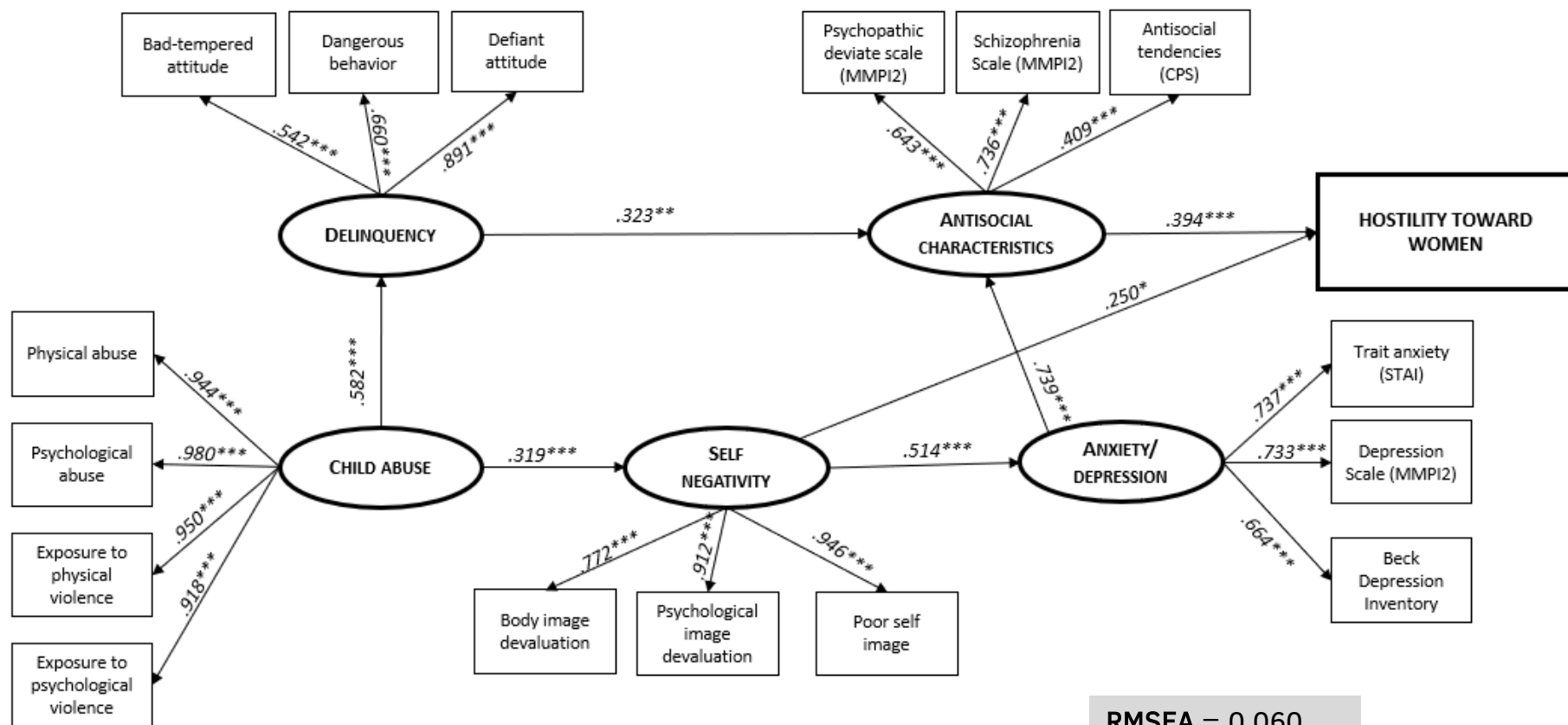
**Table 1:** *Descriptive statistics*

Variables		Total sample (N=200)
Developmental variables	<b>Child abuse</b>	
	Physical abuse	51%
	Psychological abuse	54%
	Exposure to physical abuse	48.5%
	Exposure to psychological abuse	53%
	<b>Delinquency (childhood and adolescence)</b>	
	Bad-tempered attitude	36%
	Dangerous behavior	21.5%
	Defiant attitude	53%
	<b>Antisocial characteristics</b>	
	Psychopathic deviate scale > 70 (MMPI2)	59%
	Schizophrenia scale > 70 (MMPI2)	52%
	Antisocial tendencies (CPS)	M = 28.78 ; SD = 5.41
	<b>Self negativity</b>	
	Body image devaluation	17.5%
	Psychological image devaluation	46.5%
	Poor self image	45.5%
	<b>Anxiety / Depression</b>	
	Trait anxiety (STAI)	M = 43.91 ; SD = 13.61
	Depression scale > 70 (MMPI2)	48%
	Beck Depression Inventory	M = 16.78 ; SD = 11.71
	<b>Hostility toward women</b>	58%

# 3. Results

## 3.2. STRUCTURAL EQUATION MODELING

Figure 1: *Structural Equation Modeling of pathways to hostility toward women (N = 200).*



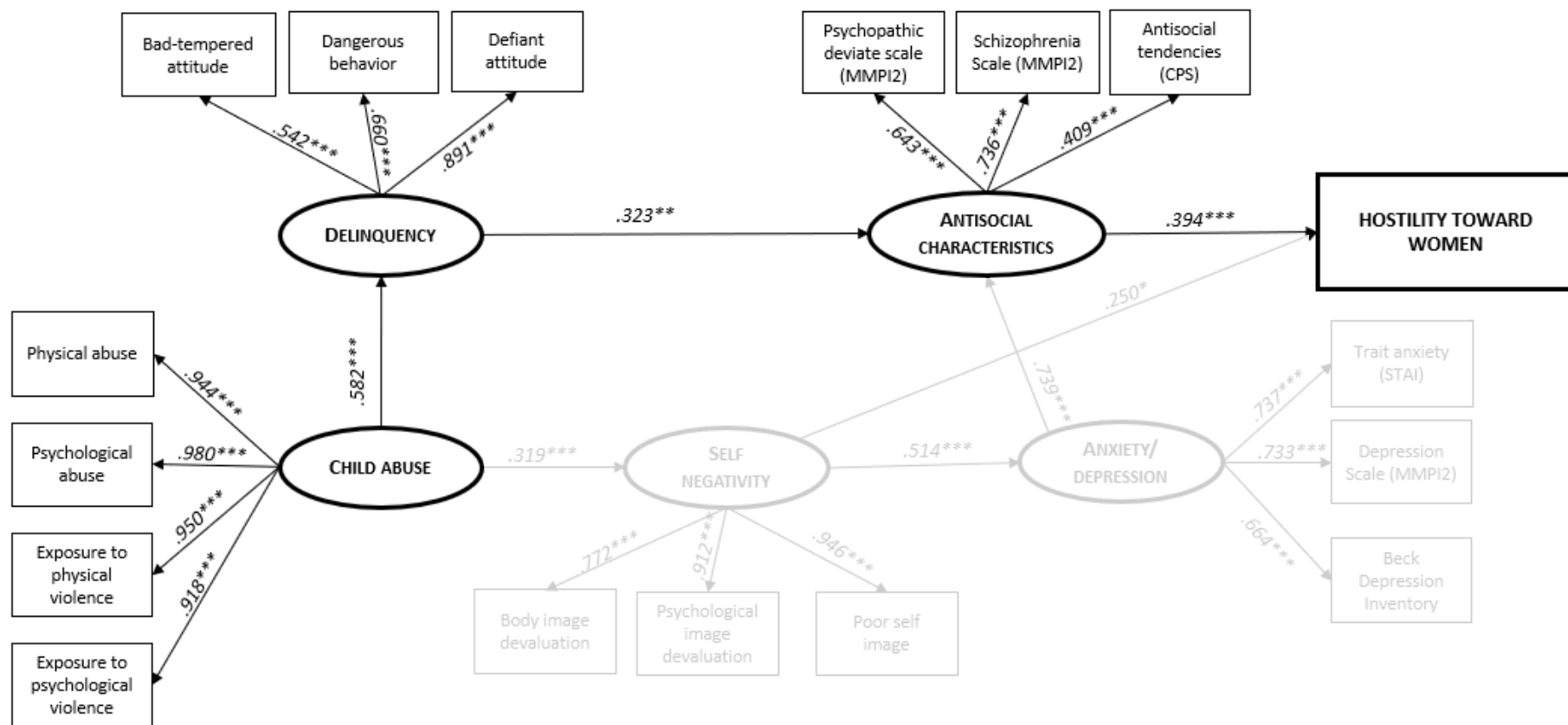
Note. \*  $p < 0,05$ . \*\*  $p < 0,01$ . \*\*\*  $p < 0,001$ .

RMSEA = 0.060  
CFI = 0.972  
TLI = 0.966

# 4. Discussion

## 4.1. OVERVIEW OF THE PATHWAYS

Figure 1: *Structural Equation Modeling of pathways to hostility toward women (N = 200).*

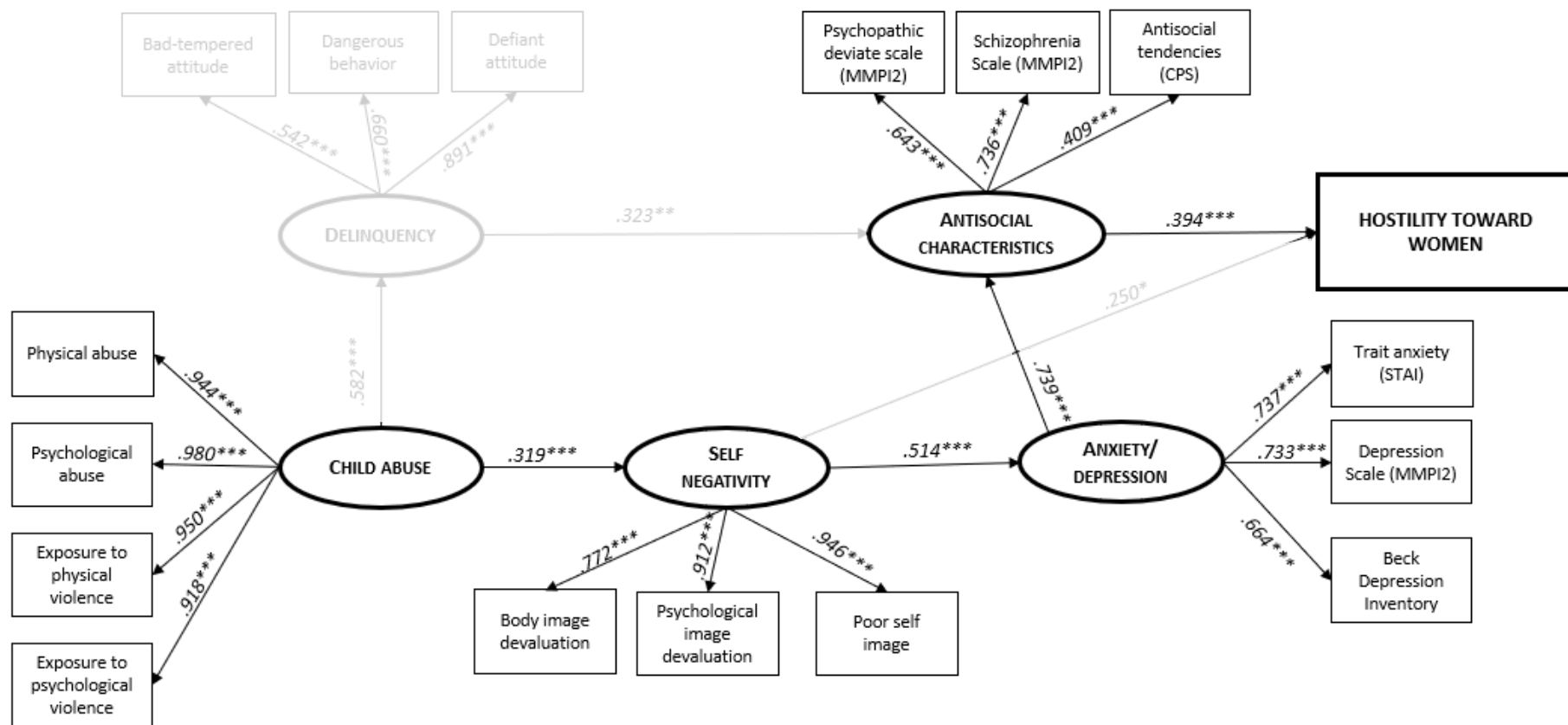


**HOSTILE MASCULINITY PATHWAY**

# 3. Results

## 3.2. STRUCTURAL EQUATION MODELING

Figure 1: *Structural Equation Modeling of pathways to hostility toward women (N = 200).*



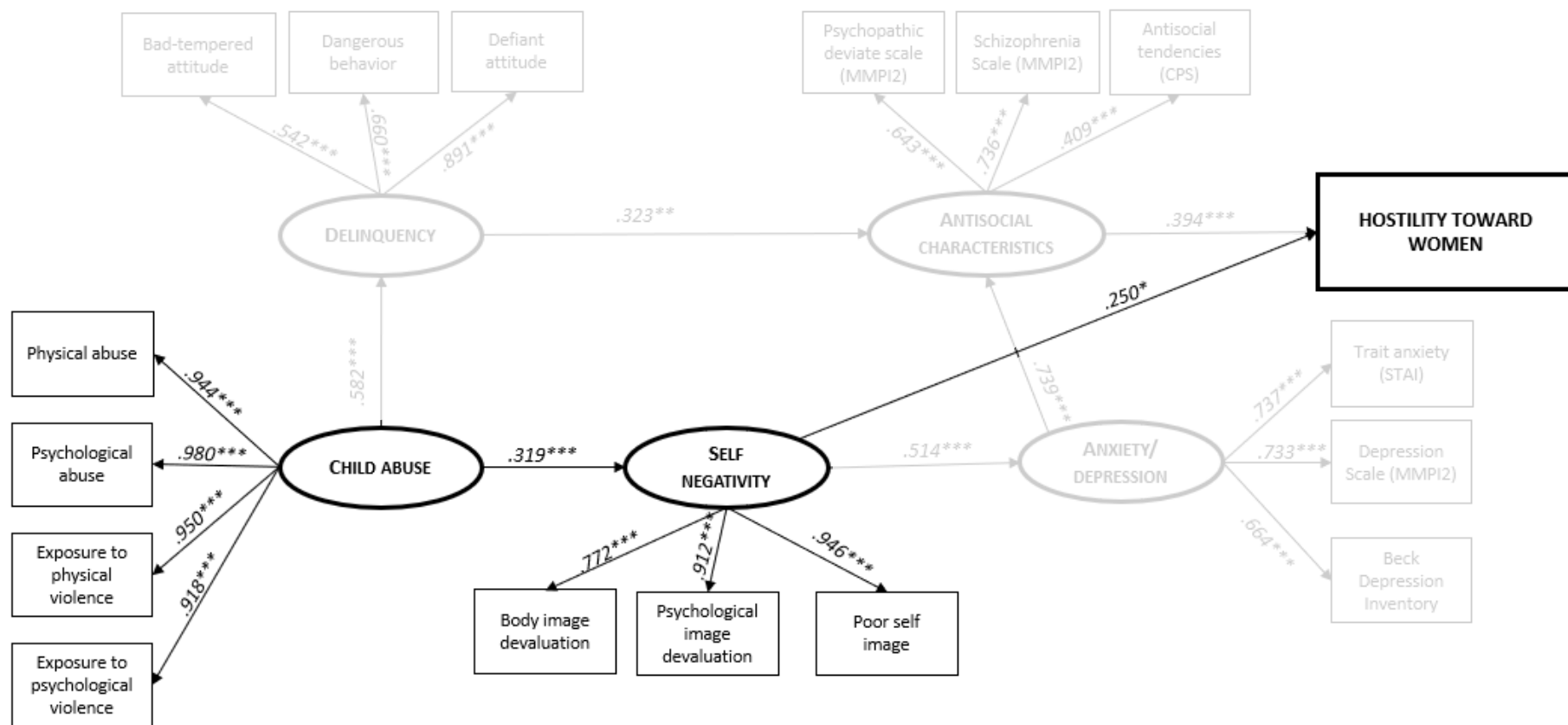
*EMOTIONAL NEGATIVITY PATHWAY (1)*



# 3. Results

## 3.2. STRUCTURAL EQUATION MODELING

Figure 1: *Structural Equation Modeling of pathways to hostility toward women (N = 200).*



**EMOTIONAL NEGATIVITY PATHWAY (2)**

# 4. Discussion

## 4.2. FUTURE RESEARCH & IMPLICATIONS

- **Conclusion:** the etiology of hostility toward women is related to antisocial, anxious, depressive and dissatisfied emotions.
- **Future research:**
  - Other measures of hostility toward women and masculinity-related constructs
  - Generalization to other populations
- Incel & misogynistic violence
- Intimate partner violence



# **Thank you for your attention.**

DELI C.

[caroline.deli@umontreal.ca](mailto:caroline.deli@umontreal.ca)

GARANT E.

[etienne.garant@umontreal.ca](mailto:etienne.garant@umontreal.ca)

GAUTHIER A.

[alexandre.gauthier.8@umontreal.ca](mailto:alexandre.gauthier.8@umontreal.ca)

PROULX J.

[jean.proulx@umontreal.ca](mailto:jean.proulx@umontreal.ca)

# References

- Beck A.T., Ward C.H., Mendelson M. et al..1961. An inventory for measuring depression. *Archives of General Psychiatry*, 4. 561-571.
- Burt, M. R. (1980) 'Cultural myths and supports of rape'. *Journal of Personality and Social Psychology*, 3. 217-30.
- Butcher, J.N., Dahlstrom, W.G., Graham, J.R., Tellegen, A., et Kaemmer, B. (1989). *Manual for the restandardized Minnesota Multiphasic Personality Inventory: MMPI-2. An administrative and interpretive guide*. Minneapolis, MN: University of Minnesota Press
- Carlson, K. A. (1981). A modern personality test for offenders: The Carlson Psychological Survey. *Criminal Justice and Behavior*, 8(2), 185-200.
- Check, J. V. P. (1988). Hostility toward women: Some theoretical considerations. In G.W. Russell (Ed.), *Violence in intimate relationships* (pp. 29-42). Great Neck, NY: PMA Publishing.
- Cowan, G., et Mills, R. D. (2004). Personal inadequacy and intimacy predictors of men's hostility toward women. *Sex Roles*, 51(1), 67-78.
- Hunter, J. A., Figueredo, A. J., et Malamuth, N. M. (2010). Developmental pathways into social and sexual deviance. *Journal of Family Violence*, 25(2), 141-148.
- Kline, R. B. (2015). *Principles and practice of structural equation modeling*. Guilford publications.
- Knight, R. A., et Sims-Knight, J. E. (2003). The developmental antecedents of sexual coercion against women: Testing alternative hypotheses with structural equation modeling. *Annals of the New York Academy of Sciences*, 989(1), 72-85.
- LeBreton, J. M., Baysinger, M. A., Abbey, A., et Jacques-Tiura, A. J. (2013). The relative importance of psychopathy-related traits in predicting impersonal sex and hostile masculinity. *Personality and individual differences*, 55(7), 817-822.
- Malamuth, N. M. (1996). The confluence mediational model of sexual aggression: Combining Hostile Masculinity and Impersonal Sex. Sex Offender Treatment.
- Marshall, W. L., et Moulden, H. (2001). Hostility toward women and victim empathy in rapists. *Sexual abuse: a journal of research and treatment*, 13(4), 249-255.
- Murnen, S. K., Wright, C., et Kaluzny, G. (2002). If "boys will be boys," then girls will be victims? A meta-analytic review of the research that relates masculine ideology to sexual aggression. *Sex roles*, 46(11), 359-375.
- Spielberger, C. D., Sydeman, S. J., Owen, A. E., & Marsh, B. J. (1999). *Measuring anxiety and anger with the State-Trait Anxiety Inventory (STAI) and the State-Trait Anger Expression Inventory (STAXI)*. Lawrence Erlbaum Associates Publishers.
- St-Yves, M., Proulx, J., et McKibben, A. (1994). *Questionnaire informatisé sur la délinquance sexuelle*. Unpublished manuscript.
- Williams, D. J., et Arntfield, M. (2020). Extreme Sex-Negativity: An Examination of Helplessness, Hopelessness, and Misattribution of Blame Among "Incel" Multiple Homicide Offenders. *Journal of Positive Sexuality*, 6(1).